

SOLOMON ISLAND WASH IN SCHOOL

Data Explorer - User Manual



GOVERNMENT OF **SOLOMON ISLANDS**

TABLE OF CONTENTS

TABLE OF CONTENTS	2
ABOUT SI-WINS DATA EXPLORER	3
HOME	4
FEATURES	4
Filtering the indicators	4
Categorised Legend	5
Scale Bar Legend	5
Static Filters	5
Viewing the school Markers - Cluster or Points	6
School details	7
Generate Custom Data Downloads	7
LIST OF INDICATOR	8
Indicator Overview	8
List of Indicators	8
School Information	8
Water Supply	8
Hygiene	8
Sanitation	8
School Management	9
DATABASE	9
Filtering by parameters	9
Download data in different formats	9
VISUALISATION	10
Filtering by parameters	10
Filtering by school location	10

ABOUT SI-WINS DATA EXPLORER

SI-WINS Data Explorer aims to create an interactive platform that gives an overview of the baseline and monitoring situation for WASH in schools across Solomon Islands to help inform stakeholder decision making and resource distribution.

This document introduces the **Data Explorer** in general and give a step by step guide in how to use the different features to explore the WASH in Schools data in Solomon Island. This app should be compatible with most web-browsers, although you will need to ensure that JavaScript is enabled. Google Chrome, Safari, and Firefox, are recommended over Internet Explorer for using the Data Explorer.

HOME

The **Home** page of the Data Explorer is designed to be the first thing you see upon entering the site. Within this page you are able to see all the schools data displayed geographically. You are able to filter the information by the *WASH in Schools indicators* (see section 1.1 and 1.2), by the *School Type* or *Province* (see section 1.3), or search for a specific school via the *search bar*.

The page is currently designed so that you can view the WASH status for schools at the National, Provincial, or Individual School level.

FEATURES

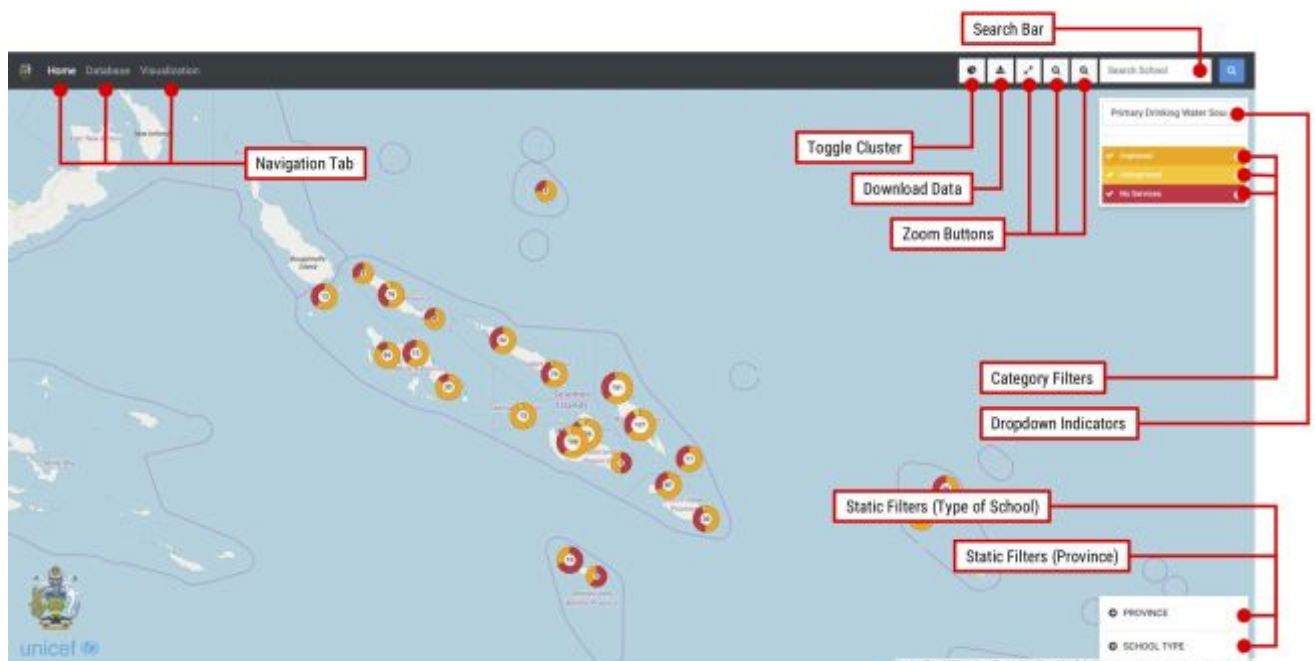


Figure 1. Buttons and Navigations

1. Filtering the indicators

The WASH in Schools data contains several key indicators taken from the global JMP standards, and national targets for the Solomon Islands. Using the *Dropdown Indicators* in the top right corner you can view the full list of available indicators from the themes of school information, water supply, sanitation, hygiene and school management. Once an indicator is selected the schools on the map will be colour coded to correspond with the legend in the top right corner of the screen (see the *Category Filters* in Figure 1).

The indicators will be represented in one of two ways, depending on the type of data.

1.1. Categorized Legend

This style is applied when the Indicator has specific answers, or categories. For instance, the type of water source, as shown in Figure 2.1 has the options of “No Service, Limited or Basic. These colour coded options will correspond with the schools on the map. If you want to know more about the different categories, hover your mouse over the “i” symbol. You can filter the schools by clicking the legend to activate / deactivate a specific category.

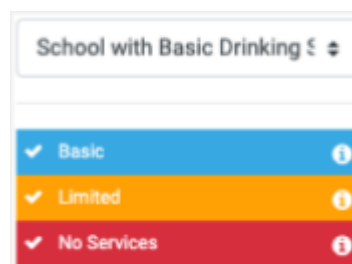


Figure 2.1. Categorized Legend

1.2. Scale Bar Legend

Indicators that are based on raw numbers or ratios. Using the sliders underneath the x axis you can limit the numbers to a specific range. Changing the range with the sliders, will also filter out the schools on the map.

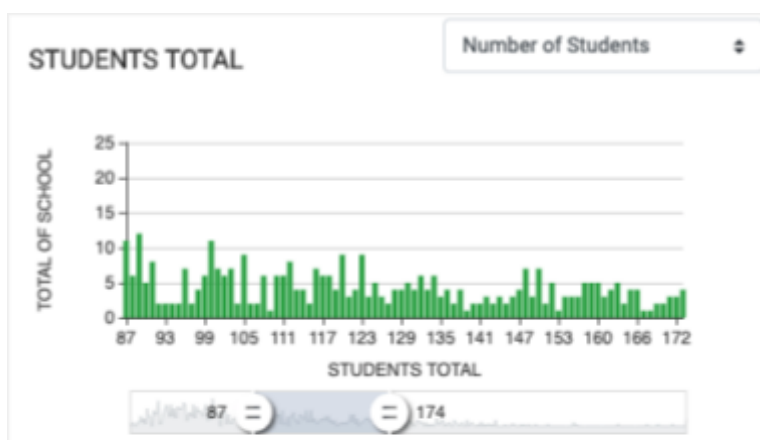


Figure 2.2. Legend with Size Slider

1.3. Static Filters

These filters allow you to filter based on the Province or the School type, and include and exclude different categories as needed. The below tablet outlines all of the possible categories you can use to filter your data.

Province	School Type
Central	Primary School
Choiseul	Community High School
Guadalcanal	Early Childhood Education Center
Honiara	National Secondary School
Isabel	Provincial Secondary School
Makira	Other
Malaita	
Renell and Bellona	
Temotu	
Western	

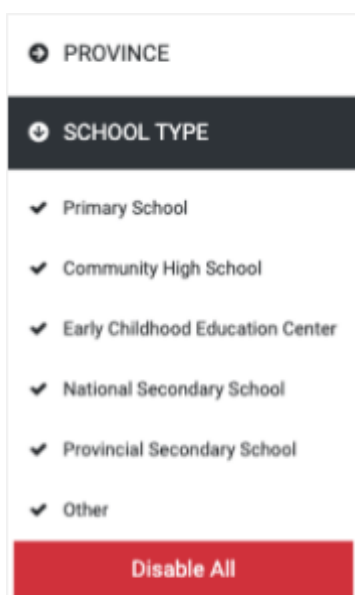


Figure 2.3. School Type Filter

2. Viewing the school Markers - Cluster or Points

The Data Explorer is designed to give you an overview of how different schools in Solomon Islands are performing against the WASH in Schools Indicators. Each of the schools is colour coded based on how they are performing against any given indicator. To learn more about how to filter on different indicators, please see section **1. Filtering the indicators**.

There are two ways you can view the schools geographic data. First is as individual points, where each dot represents the location of the school. This is great if you're wanting to see how the schools are distributed across the space, and also gives a good impression of the scale and density.

The second way is to view the data as "Clusters". A Cluster will appear as a white circle with a number in the middle, surrounded by a coloured band. The number on a cluster indicates the total number of schools it is representing. The different coloured bands around the outside represent the proportion of the schools in that cluster that have returned a specific answer. It's basically a pie-chart for the answers from those schools.

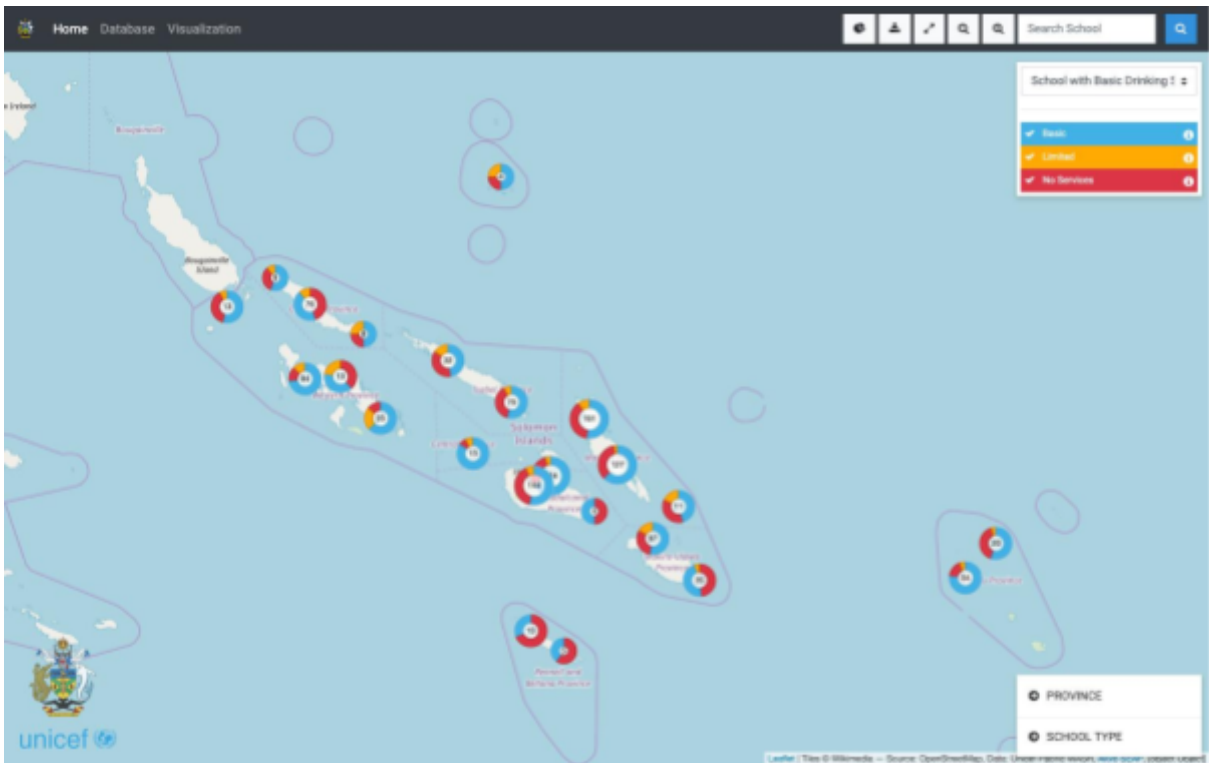


Figure 3.1. Datapoint Group by Cluster

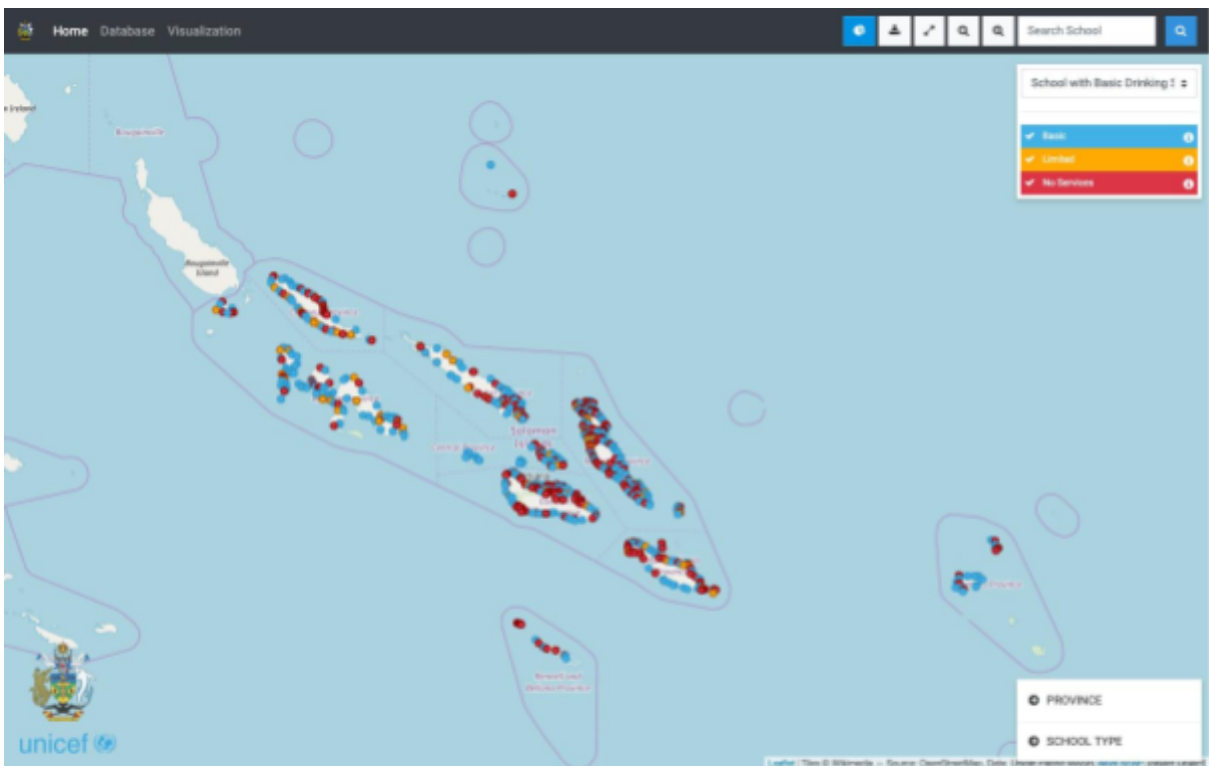


Figure 3.5 Cluster Disabled

As you zoom into or out from the map the the Clusters will adjust to as the number of schools represented changes. If you want to focus on a specific cluster, hover your mouse over the Cluster and click to zoom in quickly. You can keep zooming in until the clusters separate into single dots

representing the different schools. For more information information on School level information, please see section **3. School details**

3. School details

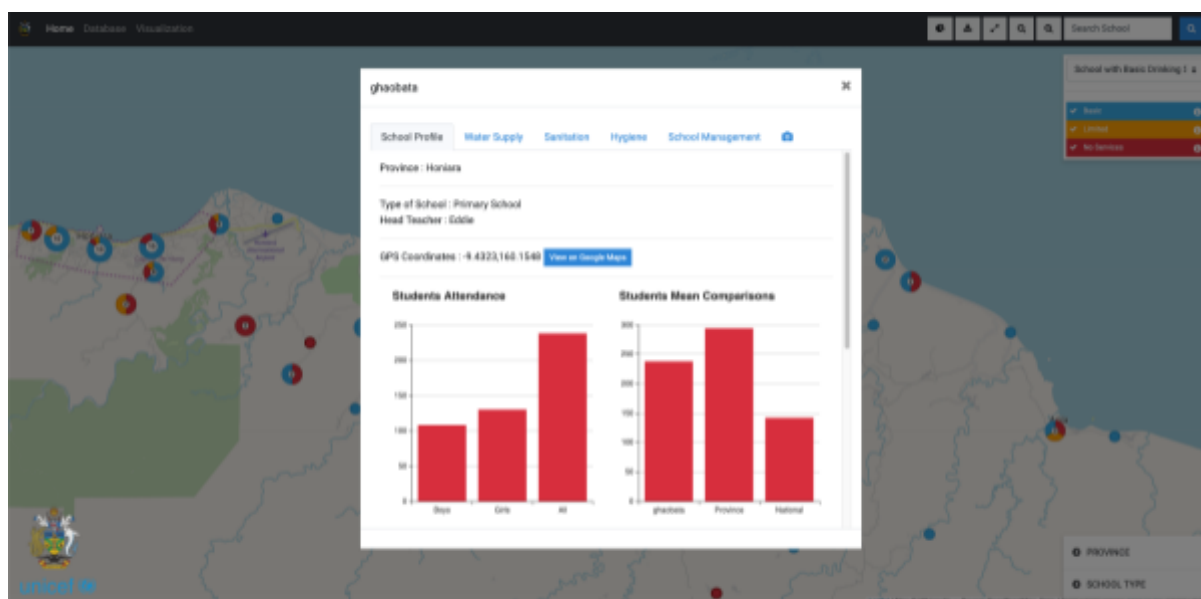


Figure 3. School Detail

There are several ways to access a specific schools information. If you know the name of the school you are searching for, you can use the search tab in the top right hand corner of the screen. Alternatively, you can zoom into the school using the map and click on the dot representing the school. Once you have clicked on the Schools dot it will bring up some basic information, with the option to “View Details”.

Once in the View Details section there are several thematic sections (listed below)

- **School Profile:** You can view information regarding the number of students and teachers at the school, the ratio of teacher to Student, comparisons to the provincial and national averages, as well as the school GPS location.
- **Water Supply:** Details on the school's water accessibility, availability and infrastructure.
- **Sanitation:** Details on the school's sanitation accessibility, availability and infrastructure.
- **Hygiene:** Details on the school's hygiene accessibility, availability and infrastructure.
- **School Management:** Information on whether the school receives funds form government, school infrastructure and presence of school WASH practices and clubs.
- **Photos:** Verification photos taken of the different water, sanitation and school management practices.

4. Generate Custom Data Downloads

Once you have done your analysis using the various filters, you can also download the filtered data. You can easily create customised downloads that meet your specific reporting needs, and download this as raw data in an excel spreadsheet.

To do so, apply any filters that you may need to restrict the data to just what you need. For more on the filters please see Section 1. Once you have done this, click on the “Download Data” (See Figure 1) button. This will open a link with a password protection. If you are not part of the ministry, or if you do not have the password you will need to contact MEHRD to request access to the data.

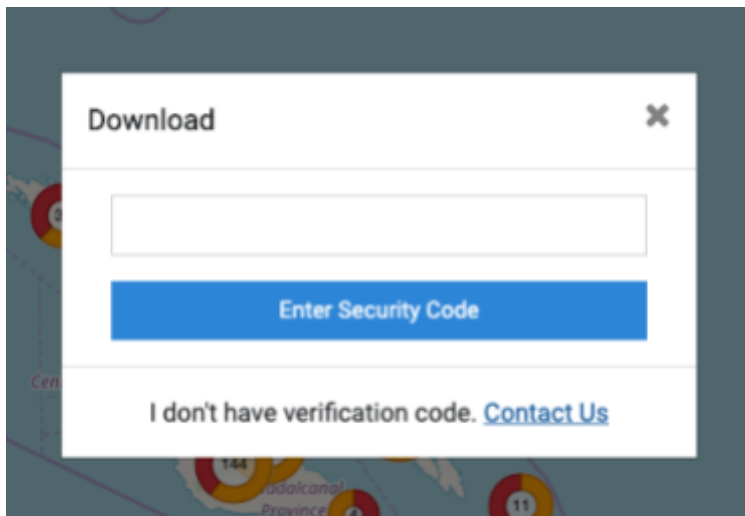


Figure 4.Download Authentication

LIST OF INDICATOR

1. Indicator Overview

School Information

Indicator label	Definition	Calculation / Question from Survey
Number of Students	The total number of students enrolled at the school	Total of number of girls plus number of boys
Number of Boy Students	The total number of male students enrolled at the school	How many boys attend this school?
Number of Girl Students	The total number of female students enrolled at the school	How many girls attend this school?
Number of Teacher	The total number of teachers	Number of male teachers

	registered teaching at the school	plus number of female teachers
Number of Male Teacher	The total number of male teachers registered teaching at the school	How many males teachers teach in this school?
Number of Female Teacher	The total number of female teachers registered teaching at the school	How many female teachers teach in this school?
Teacher/Students Ratio	The number of students per individual teacher	Number of students divided by number of teachers

Water Supply

Indicator label	Definition	Calculation / Question from Survey
Primary Drinking Water Source	This water source is the one most frequently used by the children and staff. The type of water source, is then categorised into “Improved”, “Unimproved” and “No source”, based on the JMP definitions.	Calculated with the answers to questions; 1) Does the school have a water source? 2) If yes, what is the schools primary drinking water source?
School with Basic Drinking Source	Schools with an improved drinking water source with water available at the time of the questionnaire or survey are classified as having a ‘basic’ service. Schools without water available, but with an improved source are classified as having a ‘limited’ service, and those with unimproved or no water source are classified as having ‘no service’.	Combining answers from; 1) What is the schools primary drinking water source? 2) Is the water available from the primary water source at the time of the survey? 3) Is the drinking water from the primary source available typically throughout the school year regardless of seasonal changes?
Availability of water at time of Inspection	Water needs to be flowing from the water source on demand, and specifically on the day of inspection	1)Is the water available from the primary water source at the time of the survey? 2) Verified with photo

Hygiene

Indicator label	Definition	Calculation / Question from Survey
Handwashing Facilities are Available	Handwashing facilities may be fixed or mobile and include a sink with tap water, buckets with taps, tippy-taps, and jugs or basins designated for handwashing.	Are there hand washing facilities at the school?
Schools with Basic Handwashing	Schools with handwashing facilities with water and soap available at the time of the questionnaire or survey are considered to have 'basic' service. Those with handwashing facilities that have water available at the time of the questionnaire or survey, but no soap, are considered to have 'limited' service, while schools with no facilities or no water available for handwashing are classified as having 'no service'.	1)Are there hand washing facilities at the school? 2)Are both soap and water available at the hand washing facility?
Handwashing Facilities have Soap and Water Available	Soap includes bar soap, liquid soap, powder detergent, and soapy water but does not include ash, soil, sand or other hand washing agents. Water must be available for handwashing at the time of the survey.	Are both soap and water available at the hand washing facility?
Private Washing Facilities for Girl	Girls need an area that is private with doors lockable from the inside where they can wash their bodies. It is an essential part of Menstrual Hygiene Management.	Does the school have a changing area where girls can change and wash safely private and secure door and lock and hangers?
WASH Club	The WASH Club is a group of students organised to promote WASH activities	Does the school have student wash clubs?

Sanitation

Indicator label	Definition	Calculation / Question from Survey
Separated toilet	School has separate toilets for male and female students	Are separately marked for boys and girls?
Number of Toilets	Number of toilets available at the school	How many toilets are available at the school?
Toilets for Girl	Number of toilets specified for female students	How many toilets are available for girls?
Toilets for Boy	Number of toilets specified for male students	Many toilets are available for boys?
Toilet Ratio	Number of students per toilet	Number of students divided by number of toilets for student use
Toilet Girl Ratio	Number of female students per female specified toilets	Number of female students divided by number of toilets for female student use
Toilet Boy Ratio	Number of male students per male specified toilets	Number of male students divided by number of toilets for male student use
Schools with Basic Functional Toilets	<p>Schools with improved sanitation facilities which are single-sex and usable at the time of the survey or questionnaire are classified as having 'basic' service. The term 'usable' here refers to toilets or latrines that are accessible to students (doors are unlocked or a key is available at all times), functional (the toilet is not broken, the toilet hole is not blocked, and water is available for flush/pour-flush toilets), and private (there are closable doors that lock from the inside and no large gaps in the structure).</p> <p>Those using improved sanitation facilities which are either not single-sex or not</p>	<p>1) Does the school have toilets?</p> <p>2) Which of the toilet type do students use the most?</p> <p>3) Are the seperately marked for boys and girls?</p> <p>4a) How many of the toilets are functional on the day of the visit?</p> <p>OR</p> <p>4b) How many boys toilets are functional on the day of the visit?</p> <p>AND</p> <p>4c) How many girls toilets are functional on the day of the visit?</p>

	usable are classified as having 'limited' service. Schools with unimproved or no toilets are classified as having 'no service'.	
Primary Sanitation Type	Improved sanitation facilities are those designed to hygienically separate excreta from human contact, and include: flush/pour flush to piped sewer system, septic tanks or pit latrines; ventilated improved pit latrines, composting toilets or pit latrines with slabs.	1) Does the school have toilets? 2) Which of the toilet type do students use the most?

School Management

Indicator label	Calculation / Question from Survey
Cleaning Schedule	1)Is there a cleaning schedule for the toilet facilities? 2) If yes, please take a photo of the cleaning schedule?
Government Funds	Does the school receive government grants annually?
Community Support	Did the school get any support from the community?
Teacher Training or Workshop	Do teachers receive training/workshops?

DATABASE

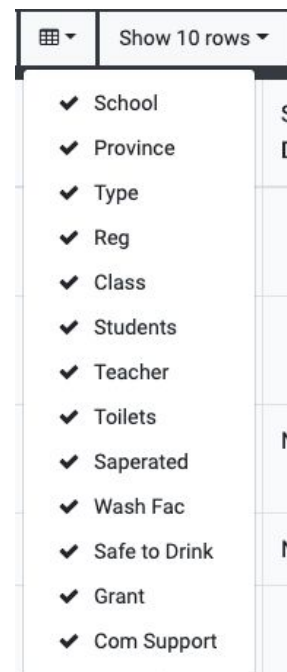
The **Database** page is where you can view and download the data from the WinS Baseline in a tabulated format. You can see the high level information from each school, including funding, community support, and numbers of teachers and students.

School	Province	Type	Reg	Class	Students	Teacher	Toilets	Saperated	Wash fac	Safe to Drink	Grant	Com Support
Athena ACE School	Rennell and Bellona		999	5	30	2		●	No		0	Yes
A,as Extension (Aboas) Adventist	Malina	Primary School	0	7	107	6	0	●	No		0	Yes
ABC	Honiara	Early Childhood Education Center	0	1	46	5	0	●	Yes	No	0	Yes
ALEANG	Western	Primary School	94880	4	81	5		●	No	No	15000	Yes
ALEANG	Western	Early Childhood Education Center	999	1	21	1		●	No		0	Yes
Aboas Adventist	Malina	Primary School	0	7	106	8	4	●●●	No	No	0	Yes
Acobe Kindy	Malaita	Early Childhood Education Center	1	2	25	3		●	No		1	Yes
Adasa Kindy	Malaita	Early Childhood Education Center	1	2	49	3	6	●●●	Yes	No	1	Yes
Adasa P.S.S	Malaita	Provenal Secondary School	63	16	193	26	16	●●●●	Yes	No	1	Yes
Adasa Primary	Malaita	Primary School	6131	7	122	9	6	●●●	Yes	No	1	Yes

Figure 5. Database Page

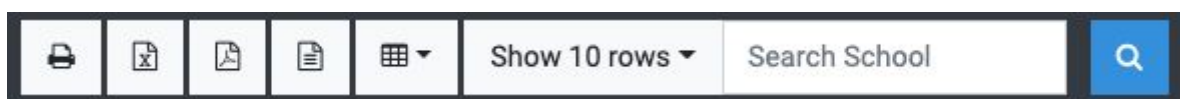
1. Show / Hide Columns

By default the database page will show all of the categories displayed in the figure to the right. However if needed you can filter these columns so that only the relevant columns are showing. To do this, click on the button with a picture of grid on it, directly to the left of the search bar in the upper right of the screen. This will bring up a drop down menu with a list of all the parameters available. The parameters will have a tick next to them if they are currently showing. To remove or hide then click on the parameter. To show the parameter again, click on the parameter once to reveal the tick.



2. Download data in different formats

On the database page, you are also able to download the data from the database in a variety of formats. You can choose between **print, excel, pdf and word(.doc format)**. To do so, slightly go to the bar at the top of the page, and click on the relevant icon. It will download the data with all of the current filters applied.



VISUALIZATION

The **Visualization** page contains visualisations on the following topics, and allows for comparisons of the different provinces against the National average.

- Does The School Have A Water Source?
- Proportion of Schools with Basic Drinking Water From An Improved Source Available At School
- Primary Water Source
- Is the Water Available From The Primary Water Source At the Time Of The Survey?
- Does The School Have Toilets?
- Single-sex Basic Sanitation Toilet
- Is the Sanitation Improved?
- Accessibility of Sanitation Source to Students with Limited Mobility
- Are There Hand Washing Facilities At The School?
- Are Both Soap And Water Available At The Hand Washing Facility?
- Does the School Have A Changing Area Where Girls Can Change and Wash Safely?
- Handwashing Facilities



1. Filtering by parameters

At the top of each visualisation there is a legend that has been coloured coded to correspond with the answers available. By clicking on the coloured button next to the label on the legend you will be able to turn that answer off or on. This will allow you to filter based on the different answers.

2. Filtering by school location

These filters allow you to filter based on the Province and include and exclude different categories as needed. The below tablet outlines all of the possible categories you can use to filter your data.

Province
Central
Choiseul
Guadalcanal
Honiara
Isabel
Makira
Malaita
Renell and Bellona
Temotu
Western